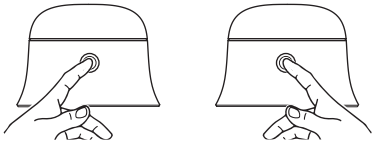


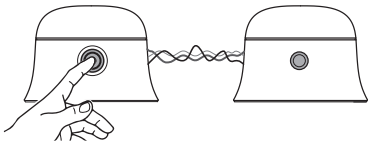
How Do I Setup True Wireless Stereo Pairing?

Step 1



Hold the button on each speaker for 3 seconds to turn them on.

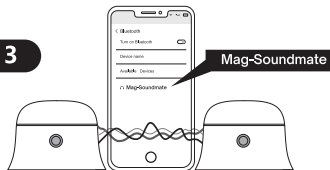
Step 2



正面

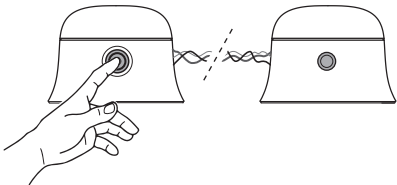
Double press the button on either speaker. You should hear the "pairing" alert, and a few seconds later the "connected" alert. At this time both speakers should be paired successfully.

Step 3



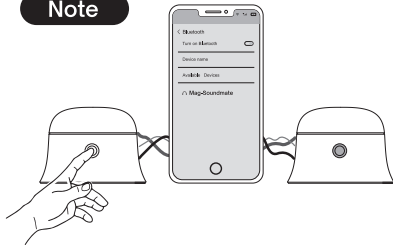
Open the Bluetooth settings on your phone, and search for "Mag-Soundmate" to connect.

How Do I Cancel TWS Pairing?



Double click the button on either one of them to disconnect the TWS mode. (Double click on one of the speakers again will pair the connection again.)

Note



While the speakers are in TWS pairing mode, you can press and hold the button on either one to shut both of them off.

After first time successfully paired, the speakers will be automatically paired every time when you turn them on.

背面